

Coffee King, Inc.

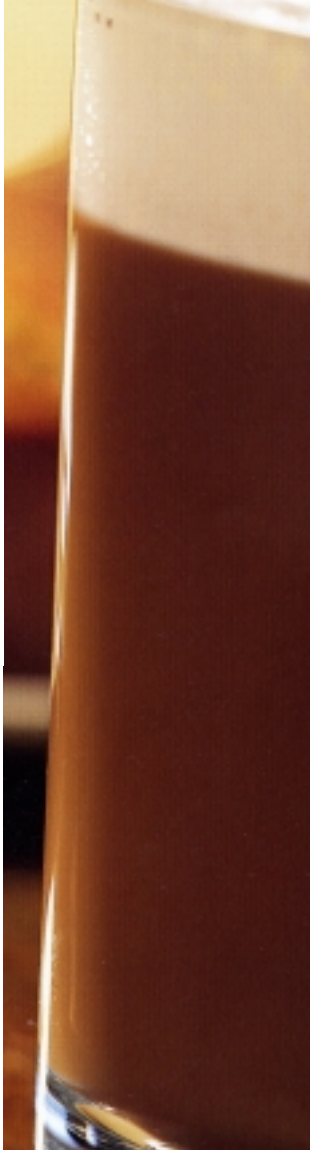


Island Oasis

PO Box 1206, Sioux City, IA 51102 (phone) 800.728.8007 > 712.239.5000 (fax) 712.252.5775 (web) www.coffeekinginc.com



Oregon Chai Tea Lattes



What is Oregon Chai?

[Pronounced "eye" with a "ch" in front.] A blend of black tea, honey, vanilla, spices and milk, prepared like a latte. Oregon Chai is one company's interpretation of chai. Ancient recipe meets American palate in a sweet, spicy, soothing Oregon Chai Tea Latte. Hot or iced, morning or evening, summer or winter - nourish your yin and elevate your yang with this creamy blend of tea, spice and spirit.

Packaging

12/32-ounce Quart Package designed for easy use, efficient storage, and Retail Sale.

One year shelf-life unopened, varies when opened, available in Original and Kashmir.

Pricing

12/32-ounce Quarts: \$48.50 per case, \$0.126 per ounce

Original Chai

Black Tea, Honey, Vanilla & Spices

This is where it all started. Where creation evolved to a higher plane. Where paradise lingers and the scent of cinnamon and vanilla drifts from the heavens. Where the landing of milk and honey brought perfection to your world. Morning, noon or night, nirvana awaits.

Caffeine Info: An Original Chai Tea Latte has approximately 30-35 mg of caffeine per serving (same as a lightly brewed cup of black tea).

Kashmir Green Tea

Almond, Green Tea, Honey & Vanilla

If you're a mouse you already know about all those studies that hint at the incredible benefits of green tea. So you're probably downing Kashmir Green Tea by the thimble-full, and not just for its exotic spices and almond lusciousness either. But humans are slow. Run up the pants leg of the next person you see and tell them the news.

Caffeine Info: A Kashmir Green Tea Chai Tea Latte has approximately 20-25 mg of caffeine per serving (same as a cup of lightly brewed black tea. Coffee has 100 - 150mg).



Oregon Chai Apple Cider

- 4 oz. Oregon Chai concentrate
- 4 oz. Apple Cider
- Cinnamon Stick

Mix above ingredients and steam to 150 degrees. Pour into 12 oz. cup. Serve with a cinnamon stick and a ginger snap.

Oregon Chai Ivory Vanilla

- 4 oz. Oregon Chai concentrate
- 4 oz. Milk
- 1 1/2 oz. Torani Vanilla Syrup

Mix above ingredients and steam to 150 degrees. Pour into 12 oz. cup. Sprinkle with vanilla powder.

Nirvana. Now Available By The Cup.